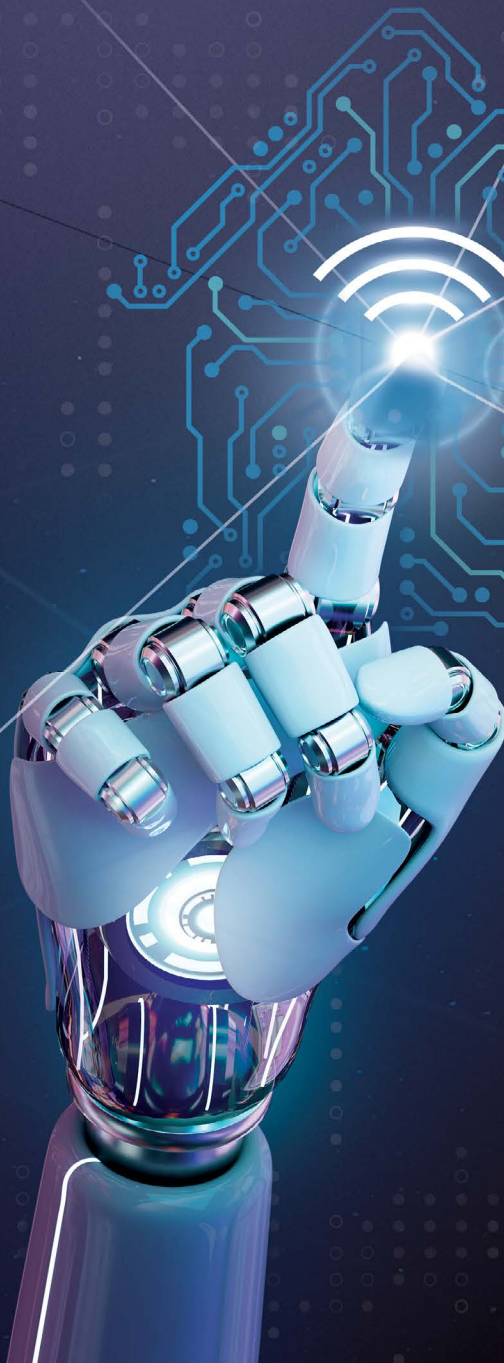


# ALARKO

## Premix Full Condensing Combi Boiler

# smart *fit*

WITH STYLISH BLACK GLASS LID,  
TOUCH SCREEN, WI-FI READY  
FEATURE, THIS COMBI BOILER  
IMPRESSES EVERYONE.



25-30-35 kW





# WITH ITS APPEARANCE and FEATURES THIS COMBI BOILER IS FASCINATING

With its stylish, hi-tech appearance and wi-fi ready feature, the new Alarko Smart Fit Combi Boiler is too impressive to be locked in kitchen cabinets. **Your neighbors will be amazed.**



smart  
*fit*

Premix condensation technology  
**LOW FUEL CONSUMPTION**

Thanks to the heat exchanger with a very large heat transfer surface in premix full condensing combi boilers, the water vapor in the flue gas condenses, that is, it turns from vapor to liquid phase while the outlet water temperature is produced at about 50°C or below. The latent heat energy in the water vapor is also retained without escaping from the chimney and transferred to the water in the exchanger. Thus, much less gas is used. Condensed water is discharged drop by drop from the drain hose under the combi boiler.

Condensate is acidic. Therefore, the main heat exchangers of premix full condensing boilers should be stainless steel or aluminum alloy. Alarko Smart Fit condensing boilers use a stainless steel main heat exchanger with a much longer service life than aluminum heat exchangers. Resistance to acidic condensation water is very high, it is not affected by electro battery, it doesn't clogging, puncture or replacement of the exchanger in a short time by causing aluminum sulfate deposits on the waste gas side.

With a premix system, i.e. a premix of gas and air in the ideal ratio of 1:10 before bur-

ning, burning always takes place ideally. This is achieved by the modulating fan, which adjusts its speed according to the capacity requirement, and the venturi, which ideally mixes the gas and air coming from the modulating gas valve with the traction of the fan.



➤ **HIGHLY EFFICIENT, QUIET, ERP-COMPLIANT, VARIABLE SPEED CIRCULATION PUMP**

➤ **STAINLESS STEEL HEAT EXCHANGER**

➤ **BRASS OUT AND RETURN BLOCKS**



The premix burner used in full condensing boilers burns the gas-air mixture, which comes in an ideal mixture, at a very low flame length. The low flame length not only ensures a low noise level, but also minimizes harmful flue gas emissions as a result of combustion. It protects nature.





## DISTINCTIVE FEATURES

- Stylish touch screen
- Resistant-to-breakage tempered glass
- Isıtma ve kullanım suyu için sürekli ve tam modülasyon
- Continuous and complete modulation for heating and domestic water
- Complete safety with frost protection, pump and 3-way valve anti-jamming safety features, automatic air purge system
- Suitable for underfloor heating
- Ability to work with natural gas and propane LPG
- Ability to benefit from the sun in hot water heating with practical connection to the solar energy system
- Ease of analog manometer
- Child lock
- Quick setting feature
- Demo mode

## WITH PERFECT COMPONENTS

# COMBI BOILER BOTH STYLISH AND PROFITABLE

Alarko Smart Fit has high performance with its **efficiency reaching 98%** and compliance with EN15502 standard by consuming only 82 watts of energy.



## With touch screen and quick setting **EASE OF USE**

The boiler is controlled from the stylish touchscreen control panel on the front. With the illuminated indicators on the right and left sides of the screen, the heating system temperature is set gradually, quickly and easily between 30°C - 85°C, and the domestic water temperature is set between 35°C - 60°C.

- 1 Operating position setting button (summer / winter / heating only)
- 2 Reset button
- 3 4 Heater water temperature increase/decrease buttons
- 5 6 Domestic water temperature increase/decrease buttons
- 7 Temperature, error code, and operating status LCD display
- 8 On/Off button 9 Child lock
- 10 Heater water temperature gradual increase/decrease buttons
- 11 Domestic water temperature gradual increase/decrease button



## BOTH STYLISH AND SMART...

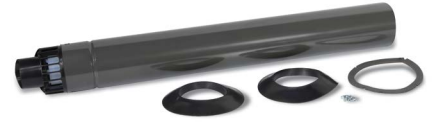


### Alarko Smart Fit combi boilers use the latest products of advanced technology such as control card and flexible video card.

With its advanced features, the Control Card works in harmony with the gas valve and fan, constantly monitors the sensors, and ensures the safe and efficient operation of the boiler. *Remote controller communication network (opentherm protocol), outdoor sensor connection possibility, chimney sweeping function, parameter programming function, fault notification with error codes and software update with USB are just a few of the superior features of the electronic...* All commands given from the touch panel through the Flexible Display Card are simultaneously transferred to the control card for an easy operation.

# Technical Specifications

MODEL	UNIT	SMART FIT		
		SMF 25	SMF 30	SMF 35
<b>CE Certificate</b>		<b>1312DL6438</b>		
<b>Device Category</b>		<b>I12H/3P</b>		
<b>Heating Technical Specifications</b>				
Seasonal Room Heating Energy Efficiency Class		<b>A</b>	<b>A</b>	<b>A</b>
Seasonal Space Heating Energy Efficiency ( $\eta_s$ )	%	91,13	92,21	90,71
Efficiency at 30% Partial Load ( $\eta_p$ ) (50-30 °C)	%	97,9	97,96	96,35
Efficiency at Maximum Capacity ( $\eta_m$ ) (80-60 °C)	%	87,59	87,77	87,70
Rated Heat Power ( $P_{rated}$ ) (80-60°C)	kW	22	26	32
Maximum Heating Capacity ( $P_d$ ) (80-60°C)	kW	22,1	25,6	32,1
Minimum Heating Capacity (80-60°C)	kW	4,9	6,1	7,7
Maximum Heating Capacity (50-30°C)	kW	24,3	28,1	34,9
Heating Capacity at 30% Partial Load ( $P_1$ ) (50-30°C)	kW	7,33	8,551	10,59
Minimum Heating Capacity (50-30°C)	kW	5,4	6,9	8,3
Auxiliary Electricity Consumption at Full Load ( $e_{el,max}$ ) (80-60°C)	kW	0,079	0,086	0,114
Auxiliary Electricity Consumption at Partial Load ( $e_{el,min}$ ) (80-60°C)	kW	0,036	0,035	0,053
Annual Energy Consumption ( $Q_{del}$ )	GJ	42	50	63
Heating Temperature Setting Range (Min. - Max.)	°C	30 - 85 (Radiator Heating) / 25 - 50 (Underfloor Heating)		
Heating Operating Pressure (Min. - Max.)	bar	0,5 - 3		
<b>Hot Water Technical Specifications</b>				
Water Heating Energy Efficiency Class		<b>A</b>	<b>A</b>	<b>A</b>
Water heating energy efficiency ( $\eta_{WH}$ )	%	86	86	85
Water Heating Load Profile		XL	XL	XL
Hot Water Flow Rate at $\Delta T:30K$	liter/min	13	14	16
Maks. Sıcak Su Debisi	liter/min	14	18	18
Daily Electricity Consumption ( $Q_{elec}$ )	kWh	0,186	0,181	0,19
Annual Electricity Consumption (AEC)	kWh	41	40	42
Daily Fuel Consumption ( $Q_{fuel}$ )	kWh	22,838	23	22,442
Annual Fuel Consumption (AFC)	GJ	18	18	18
Hot Water Temperature Setting Range (Min. - Max.)	°C	30 - 60		
Hot Water Operating Pressure (Min. - Max.)	bar	0,5 - 10		
<b>General Technical Specifications</b>				
NOx Class		6	6	6
Nitrogen Emission ( $NO_x$ )	mg/kWh	37,05	46,03	43,18
Sound Power Level, Indoor ( $L_{WA}$ )	dB	54	54	57
Auxiliary Electrical Consumption in Standby ( $P_{Sst}$ )	kW	0,004	0,004	0,004
Heat Loss During Standby ( $P_{Sbsty}$ )	kW	0,063	0,066	0,073
Ignition Burner Energy Consumption ( $P_{ign}$ )	kW	5,51	5,24	7,33
Flue Gas Temperature (50-30 °C, Min. - Max.)	°C	45-52		
Flue Gas Temperature (Max. 80-60 °C)	°C	71,6		
Gas Consumption (Natural Gas - LPG)	m <sup>3</sup> /h - kg/h	2,3 - 1,7		
Electricity Consumption	W	82	84	117
<b>Physical Properties</b>				
Flue Type		B23 - B33 - C13 - C13(x) - C33 - C33(x) - C43 - C43(x) - C53 - C53(x) - C63 - C63(x) - C83 - C83(x) - C93 - C93(x)		
Standard Horizontal Concentric Flue System - Max. Length	ø - m	60/100 - 8		
Vertical Concentric Flue System - Max. Length	ø - m	60/100 - 8		
Twin Flue System - Max. Length	ø - m	80+80 - 50		
Size (Width x Height x Depth)	mm	437 x 642 x 259		
Weight (Net)	kg	28,9	30,8	32
Expansion Tank Capacity	liters	8		
Heater Outlet - Inlet Diameter	ø	3/4"		
Cold Water Inlet - Hot Water Outlet Diameter	ø	1/2"		
Gas Inlet Diameter	ø	3/4"		
Gas Inlet Pressure (Natural Gas-LPG)	mbar	20 - 30		
Power Source	V/Hz	230/50		
Protection Class	IP	X4D		



## Standard Flue Set

Aesthetic flue set compatible with the color of the boiler; supplied with the device as standard, and can be replaced with a different set during the order if desired.

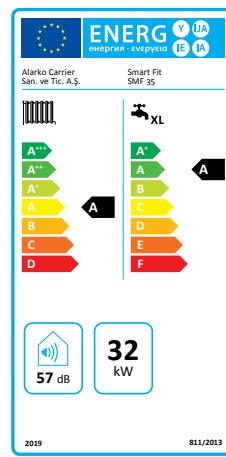
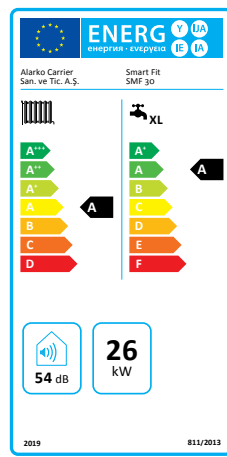
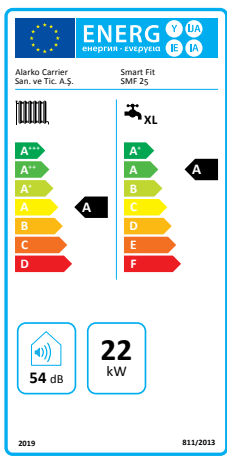


Using your smart thermostat, you can control your combi boiler from anywhere in the world with your smartphone or tablet. You can access and change current temperature settings or time schedules.



You can get information about different automatic control accessories on our website.

\*Optional.



Manufacturer reserves the right to change any product specifications without notice.

**ALARKO**



**ALARKO CARRIER  
SANAYİ VE TİCARET A.Ş.**